



SWPF User Manual

Ver 1.8.9

www.pmi-tech.com

content

Introduction.....	1
SWPF	1
Location	1
Installation	3
Enviroment.....	3
Installation	3
System control.....	9
hotkeys	9
System Setting	9
Quick Start.....	9
Start iUI.....	10
Start CMS	10
Running Mode	10
Menu	2
iUI - Interactive UI	2
layout of iUI.....	2
Live Contents	3
CMS – Content Management System	3
CMS login.....	3
Introduction of CMS	4
Content management	6
Upload format	6
Edit	6
Edit module	8
Add module	10
Admin settings	11
Remote device management	12
Projector.....	13
System control	13
Sound volume control.....	14
Restart SWPF host	14

Close or Open iUI.....	14
Clear the cache of SWPF host.....	14
Play screensaver.....	14
Programming interface	15
Add custom webpage.....	15
Add customization Flash or interactive UI.	15
RAR file packaging rule.....	16
Contact us	17
FAQ.....	18

Introduction

SWPF

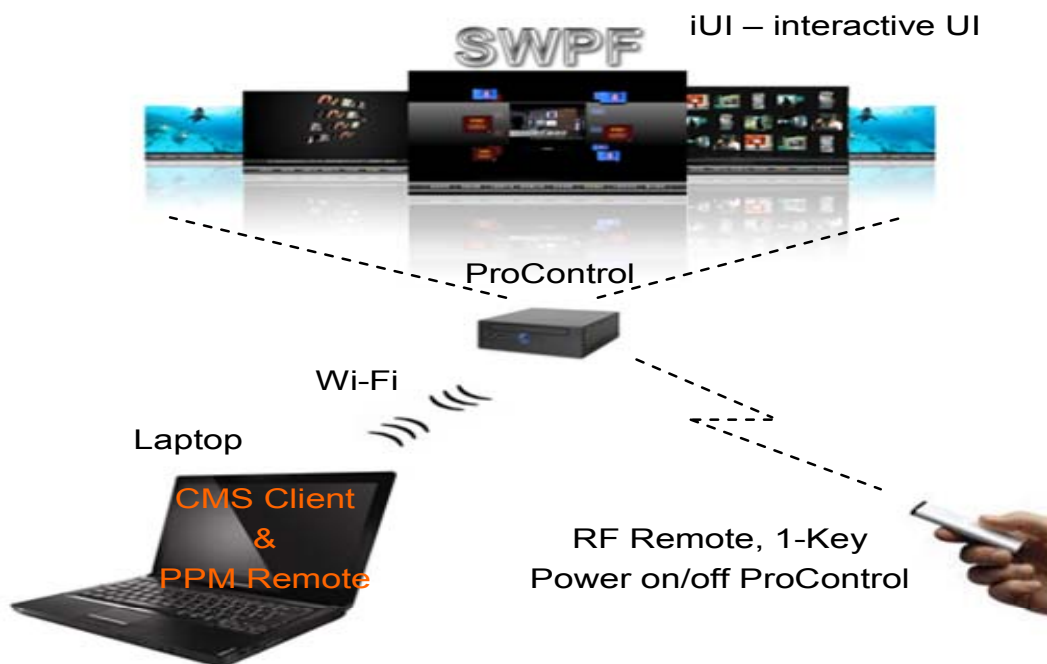
SWPF is Released by PMI Technologies Inc. (www.pmi-tech.com). It's a 3D interactive software platform, applied to large size touch screen, touch wall, interactive applications etc.. It consists of three modules, 1st iUI - interactive UI, which is best-in-class 3D interactive UI. 2nd CMS - Content Management System, that could be easily used to update text, pictures, videos, etc. 3rd PMM - Peripheral Management Module, which has well management of communications that between peripheral and OS.

SWPF has much more than 20 dynamic interactive UI templates. Templates means you can customize content of the UI. Also the open I/F is a flexible interface for customer's self-developed interactive UI. In terms of this, SWPF can extend infinitely, so we called it a Software Platform.

With the push-forward technology of CMS, contents of UI could be updated in realtime. Shinning & Cool 3D UI would blast your sense of sight. 1-key power on / off management of PC & peripheral makes maintenance simply, nearly zero-maintenance. In a word, it's a best choice for interactive solutions and applications.

Location

SWPF is not only an IMS - Information Management System for interactive market, but also a DCS - Distributed Control System of peripheral hardware.



Diag 1, location of SWPF module

Diag 1 shows location of SWPF module

ProControl, SWPF is installed on, is an IPC - Industrial PC. It shows the connection of distributed peripheral in diag 2.

Laptop, is a remote client of SWPF, used to update contents and control Peripherals, via Wi-Fi or LAN. PPM Remote is a tool, called RemoteCtrl, that locates in SWPF CD, install it on this laptop would quickly change this ordinary laptop to Super Client of SWPF. Through this laptop, You can adjust sensitive of touch foil, power on/off projector or LED/LCD, adjust volume of sound and so on.

Diag 2 shows one case of SWPF application in DCS – control ProTouch interactive foil, Projector, and others. Hereafter we called it ProShow Solution.



Diag 2, distributed peripheral was connected to ProControl

ProTouch is interactive foil, that detect your touch action and deliver the action to ProControl by USB or RS232 cable.

ProDisplay is projection film, could be replaced by other display.

RF control is a RF Remote control that could power on/off ProControl and adjust sound volume of system, etc..

For more information of hardware, please visit www.pmi-tech.com or contact FAB of PMI.

Installation

Enviroment

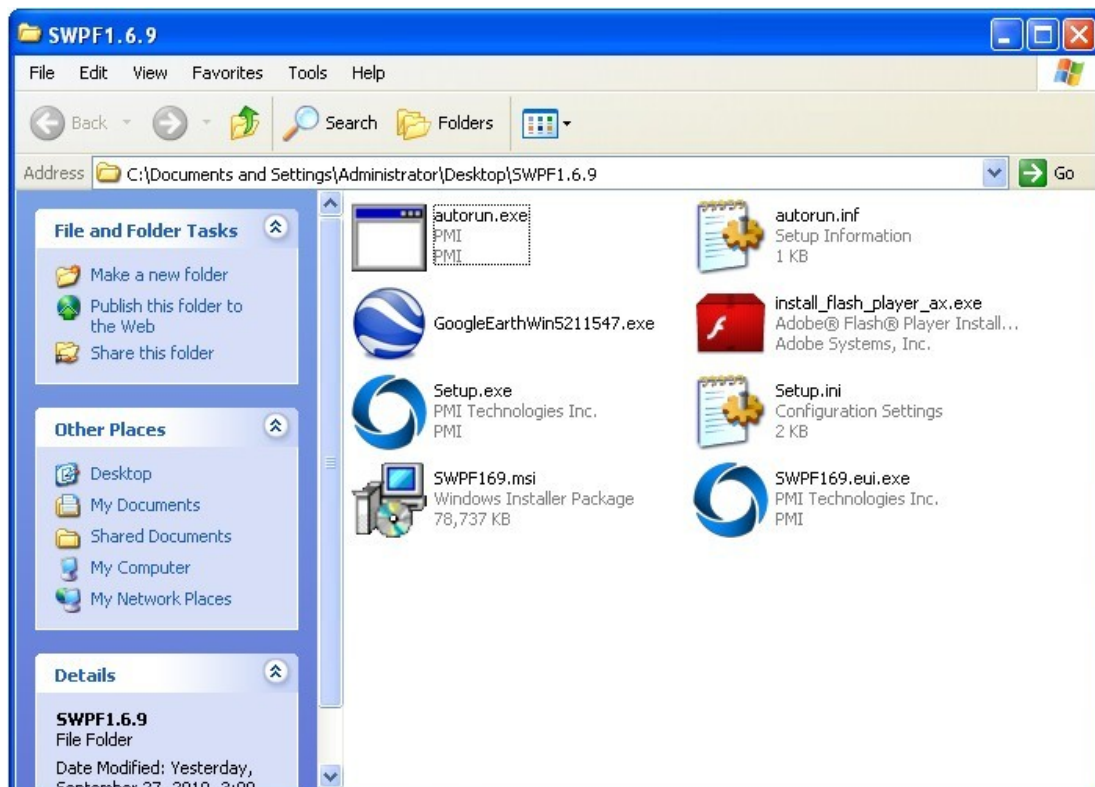
CPU	≥ 2.0 GHz
Memory	≥ 512 M
OS	Windows XP / Vista / Windows 7

Display resolution capacity

SWPF supports all resolutions of screen - normal, wide view, ultra-wide view and vertical screen. The iUI of SWPF can self-adapt to the physical resolution of screen. e.g, it supports 8:3 Cinema Mode, 9:16 vertical mode, normal 16:9 & 4:3 mode, etc..

Installation

1. Double click Setup.exe.



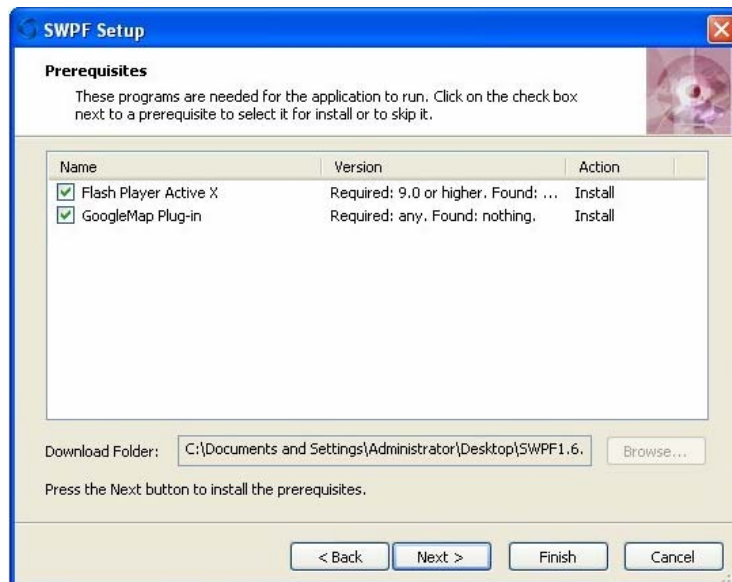
Diag 3, installation folder

2. Click "Next" on the Setup dialog.



Diag 4, Installation step 2

3. Click "Next" on Setup dialog, install operating environment.



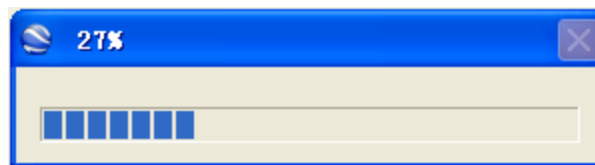
Diag 5, install operating environment

4. Select "I have read and accept the terms in the license agreement" in the Setup dialog of adobe flash player, and click "install"



Diag 6, install Adobe Flash Player

5. Click "Finish" after installation.
6. If you haven't installed Google earth plug-in, it will automatically jump to the setup dialog of Google earth. Please wait for the plug-in installation.



Diag 7, decompressing Google earth

7. Click "install" in the installation wizard of Google earth.



Diag 8, Install Google earth

8. Cancel all the check box in the setup dialog of Google Earth. See following diagram for details.



Diag 9, Finish of Google Earth installation

Install environment: 'Flash Player Active X' is a playback plug-in of Flash Player which runs under Windows IE. After installing the plug-in, you can run and use the interactive UI that based on adobe Flash. 'Google Map Plug-in' is the Google 3D earth plug-in that runs under Windows IE too. After the installation, you can run 3D earth and mark your destination on the 3D earth. With the multi-touch input device like ProTouch interactive foil, the 3D earth could be zoomed in/out and rotated.

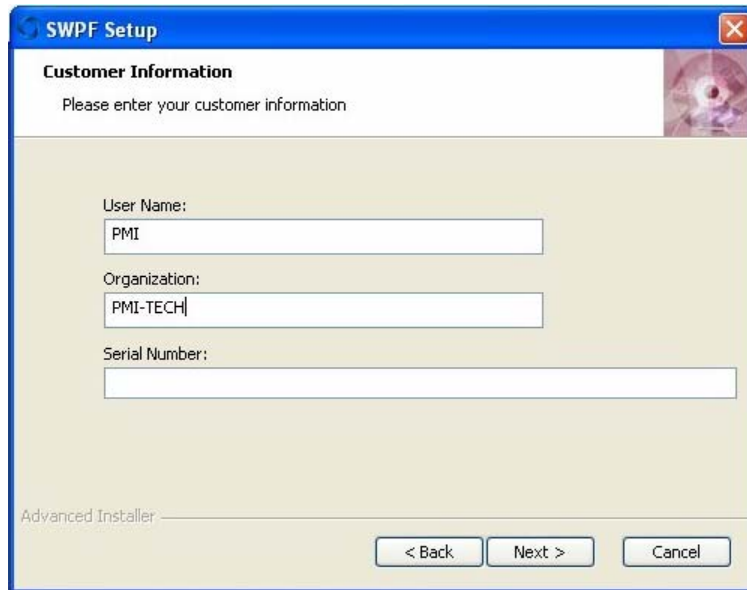
Note: If the "Finish" button in the diag 5 is enabled, you can directly click "Finish" button, so as to skip the process of install operating environment, and this would not affect properly running of SWPF on PC. If you skip the process, please connect to the network and automatically download the installation plug-in before you run SWPF.

9. When the above step is finished, please click "Finish" button to enter into SWPF installation process, click "Next" button.



Diag 10, License Agreement

10. Input your user information and input your serial number and click "Next" button.



The image shows a Windows-style dialog box titled "SWPF Setup". The main heading is "Customer Information" with a subtext "Please enter your customer information". There are three input fields: "User Name:" with the text "PMI", "Organization:" with the text "PMI-TECH", and "Serial Number:" which is empty. At the bottom, there are three buttons: "< Back", "Next >", and "Cancel". The dialog box has a blue title bar and a small icon in the top right corner.

Diag 11. Validation Process

The serial number is on the cover of installation CD or distributed by our agent.

11. Click "Next" button and then installation dialog would pop up, click "Browse" button to choose proper folder, where you want to install. then click "Next" and "Install" to begin the installation.

12. Click "OK" and complete the installation.

After the installation, to start SWPF, you can double click SWPF shortcuts on desktop, or click "SWPF" in Program menu, see Diag 13.



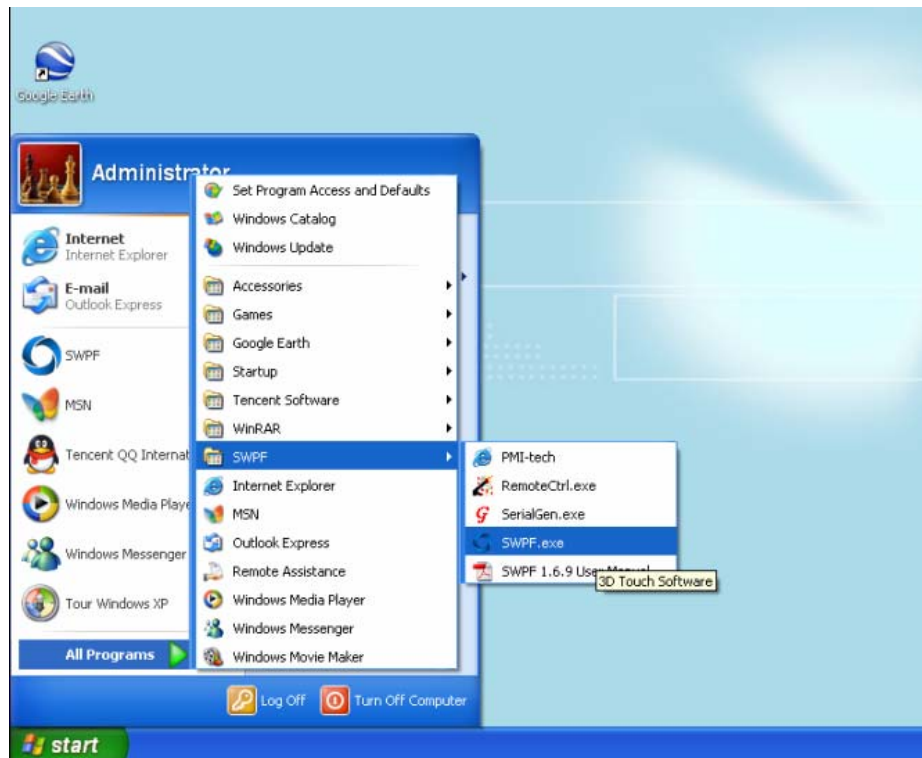
Diag 12, Finish installation

"RemoteCrl.exe" is a tool to remote control you devices.

“SWPF.exe” is the system startup program of SWPF.

“SerialGen.exe” is the generation tool to generate the register sequence number of SWPF. After you get this register sequence number by the 【SerialGen.exe】, please send it to PMI to get the key.

“SWPF user manual” is a PDF help document about SWPF - now you are reading this manual.



Diag 13, Start

System control

hotkeys

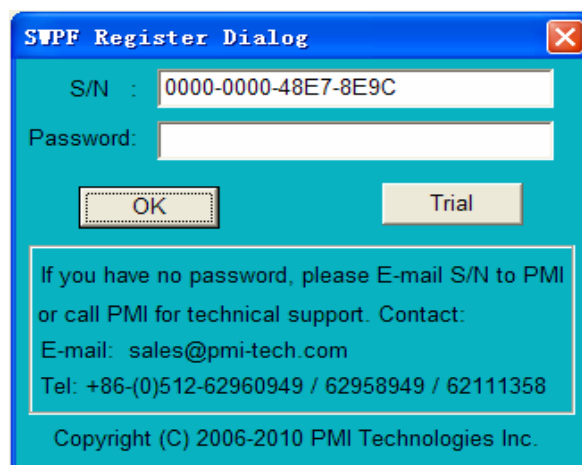
“Esc” key - exit SWPF

Right mouse button – switch button, that used to Show or Hide SWPF system setting dialog.

System Setting

Quick Start

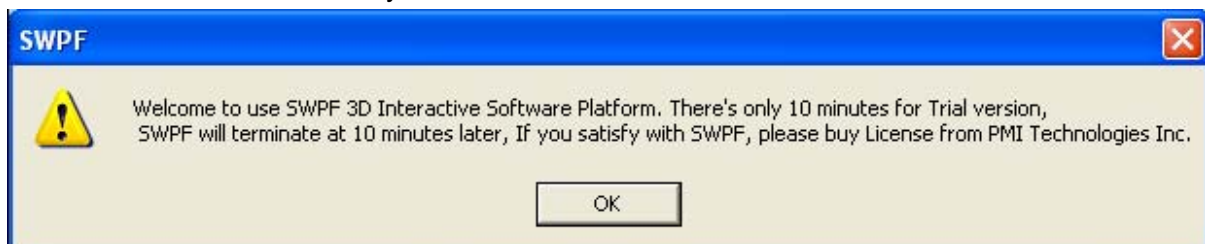
Double click shortcuts of SWPF on the desktop, start SWPF



Diag 14, register dialog

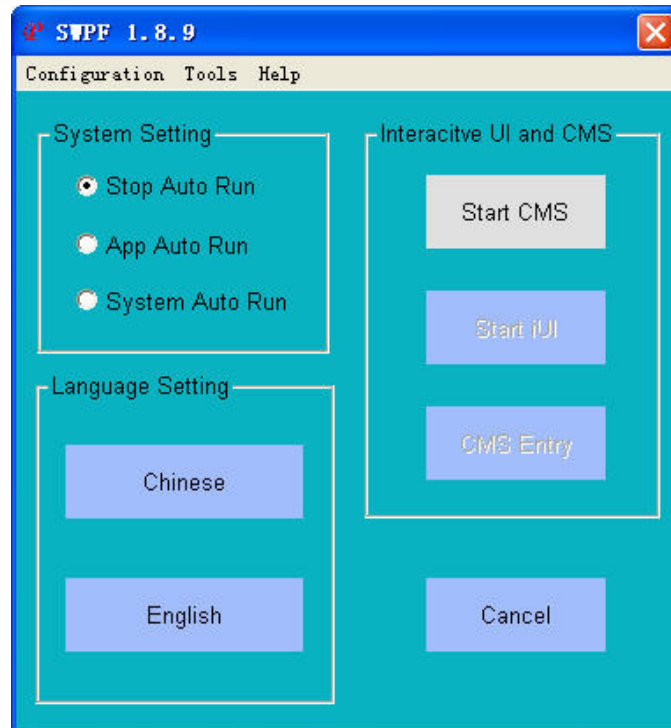
When the register dialog pops up, please send Serial Number, short for S/N, to global agent of PMI, so as to get your Password. Click "OK" button to start. This dialog would disappear in the next startup when you get license.

If you have no password, click "Trial" button. would pops up a dialog, which prompts "Welcome to use SWPF 3D interactive software platform, There's only 10 minutes for Trial version. SWPF will terminate at 10 minutes later. If you satisfy with SWPF, please buy license from PMI Technologies Inc.", click "OK" button to start your free trial. SWPF will exit at 10 minutes later.



Diag 15, Prompt dialog

Click “OK”, System settings dialog pops up, see Diag 16



Diag16, System settings dialog

Start iUI

Click “start CMS”, then click “Start iUI”, iUI is appear. Click right mouse button to hide or show System settings dialog. keyboard will be locked in this state. Show system setting dialog, click “Stop iUI”, iUI would disappear, then keyboard is unlocked and could be used normally.

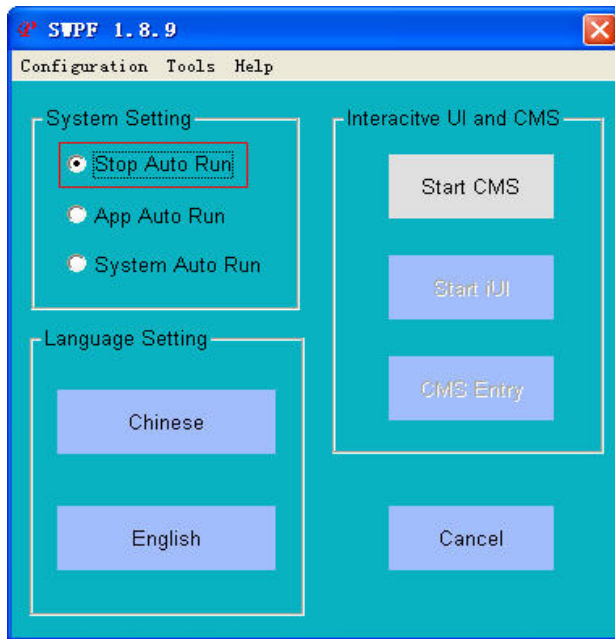
Start CMS

Click “Start CMS”, then click “CMS Entry”, the CMS page would pops up.

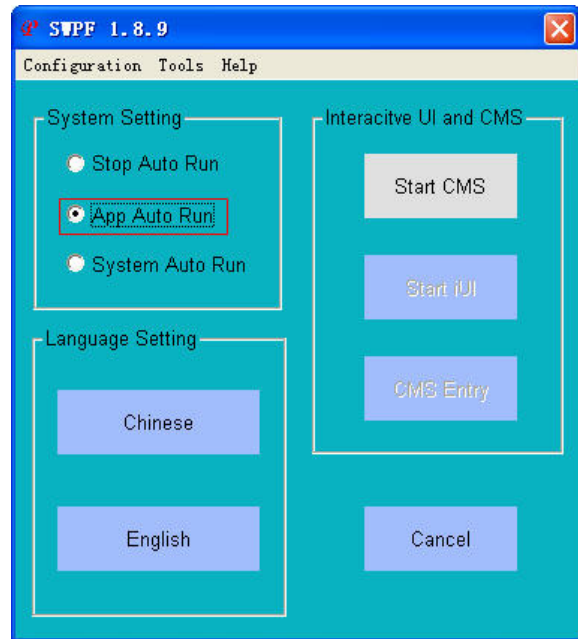
Running Mode

SWPF has 3 running mode. 1st, “Stop Auto Run”, means run manually, step by step. 2nd “App Auto Run”, means just need a double click of SWPF shortcuts. Then no need to do anything else, the interactive UI appears. 3rd, “System Auto Run”, means run automatically with Windows startup.

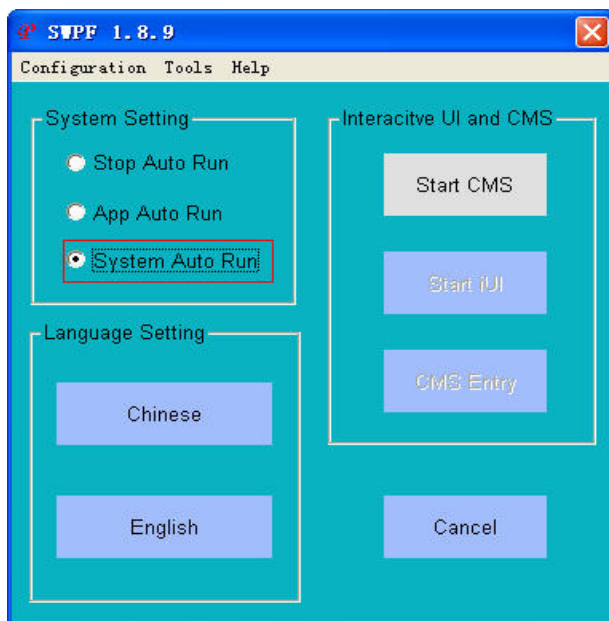
All the keys are blocked when interactive UI appears, only the Mouse and “Esc” key are valid. so only in 1st mode “Stop Auto Run” and no iUI appear, all the keys will be released, in this state, you can edit contents by CMS on local PC.



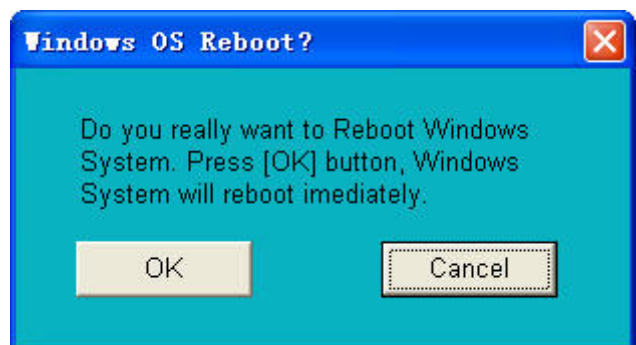
Diag 17, 1st mode – Manually



Diag 18, 2nd mode – App Auto Run



Diag 19, 3rd mode – System Auto Run



Diag 20, Windows reboot tips

Switch mode between 1st mode and 3rd mode, will pops up windows reboot tips. If you want to change mode, press "OK", otherwise click "cancel".

1st mode is suitable for contents edit and system setting.

2nd mode is suitable for conference meeting. Especially somebody want to use SWPF and his PPT simultaneously.

3rd mode is suitable for Professional interactive field. Like large touch screen and Kiosk.

Menu

Configuration

“Screen Saver...”, configure interval of Screen saver. If there’s no touch action on screen – we called this free state, when free state keep an interval time, Screen Saver would be invoked.

“Sound Volume...”, adjust system sound level.

“Language”, there are two language option,, Chinese and English. the MVC mode give SWPF excellent language extendable ability.

“AutoRun Module...”, you can configure your preferred module in this function. Your preferred module would automatically run with SWPF in 3rd mode - System Auto Run. e.g, MA7_Driver.exe

Tools

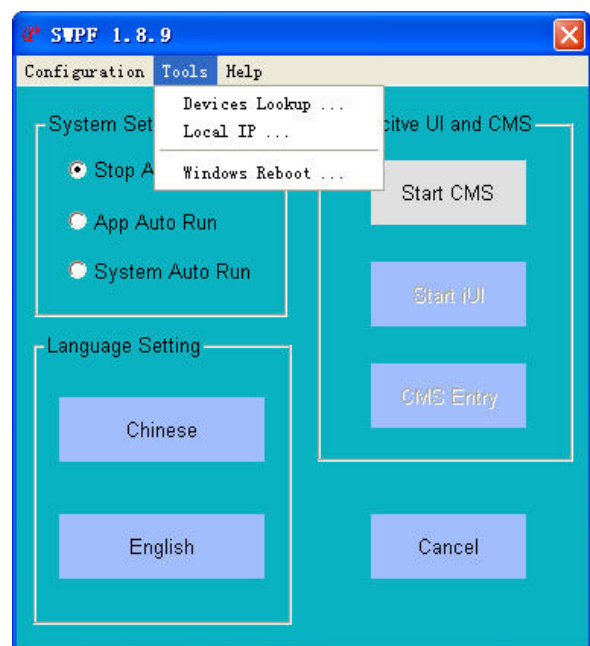
“Device Lookup...” lookup windows system devices.

“Local IP...”, Lookup IP of local host.

“Windows Reboot...”, Windows system reboot option.



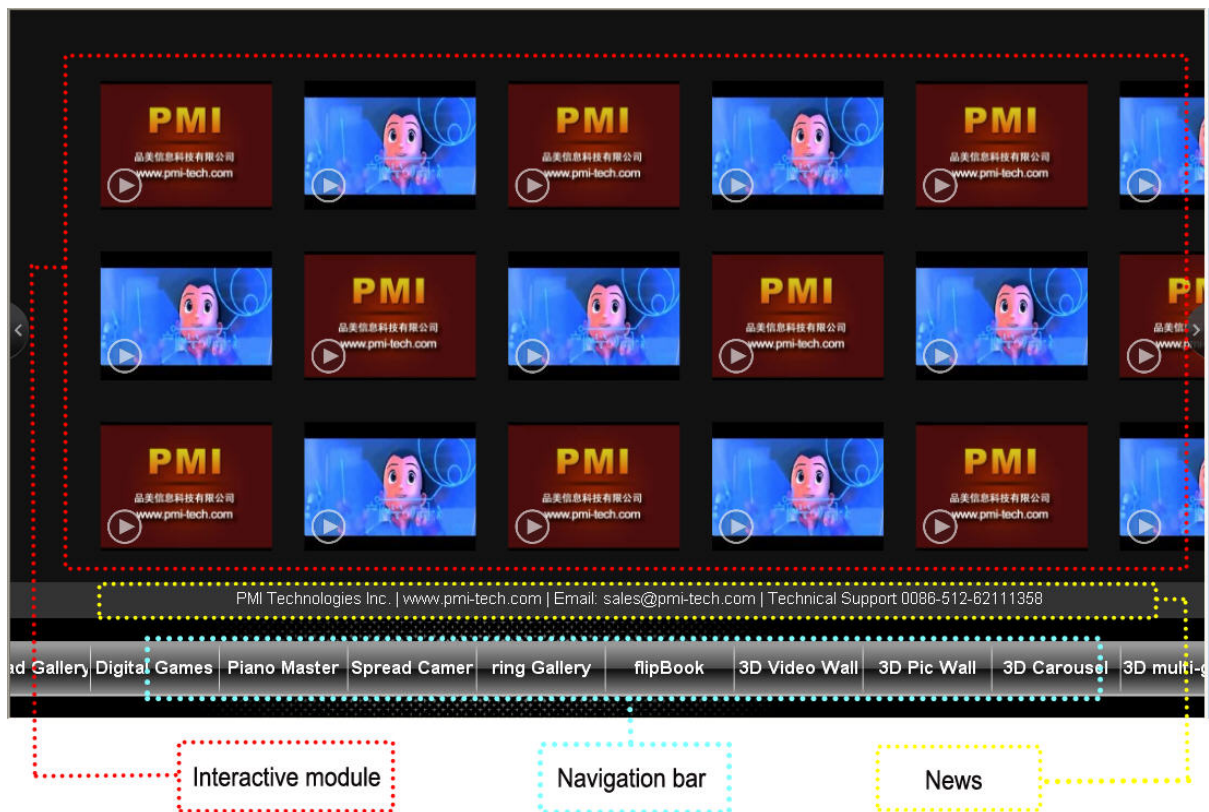
Diag 21, sub menu - Configuration



Diag 22, sub menu – Tools

iUI - Interactive UI

layout of iUI



Diag 23, layout of iUI - interactive UI

Navigation bar, each button on the navigation bar matches one interactive module. If you touch “Pin Wheel”, the Interactive Module area will display Pin Wheel interactive module. Reference to diag 23 for details. What’s more, you can modify the name and color of the module button by CMS, such as the name can be changed to “About us” or “Brand Story”, etc., Besides, you can also add button by CMS. Each button matches one interactive module.



Diag 24, Video wall module

News, You can publish your customization information here, e.g. Company info, Ads, Welcome message and so on.

Interactive Module, each Interactive module would switch into this area by customer's touch action on Navigation bar.

Live Contents

SWPF manage Text, pictures and videos with the help of 3D special effect and shows them on touch screen. When you touch the picture, it can be zoomed out/in, when you touch the video, the video will play. The display style depends on various Interactive module. the powerful CMS and real-time information publish mechanism makes the interactive UI live – fresh water.

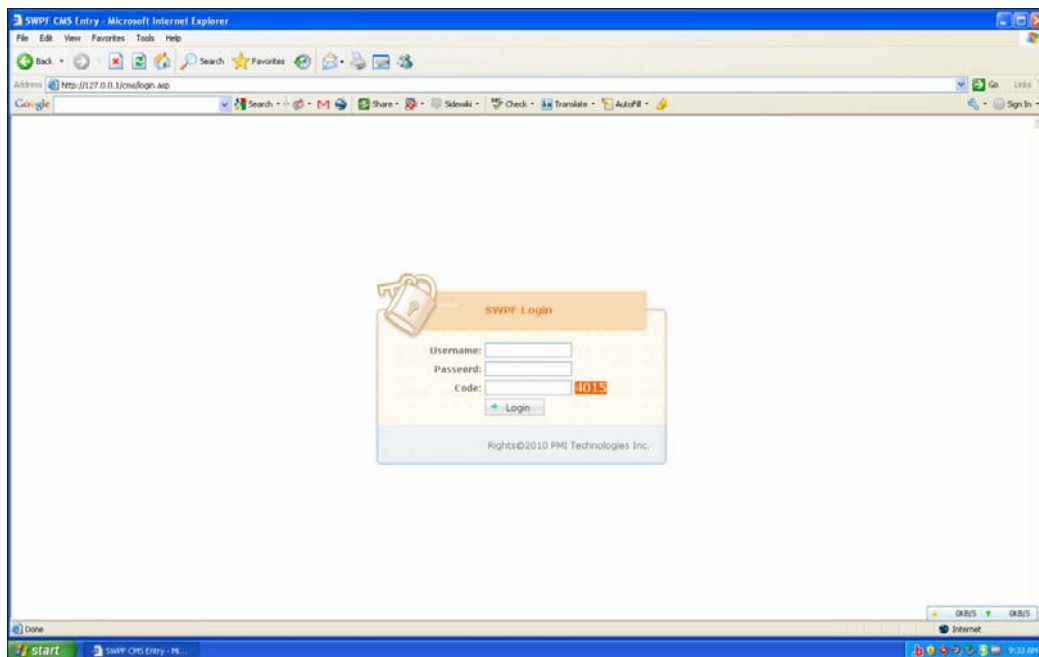
CMS – Content Management System

CMS login

Reference to [diag 1, location of SWP module](#). Open browser on your laptop or wired-LAN PC, and input the IP address of ProControl, which is a PC that installed SWPF. Make sure your laptop and ProControl are in the same LAN. e.g, the ProControl IP address is 192.168.0.200, following diag 25 input ProControl IP address.



Diag 25, input ProControl IP address
and then press “enter”, you will enter into Diag 26, SWPF CMS login page.



Diag 26, SWPF CMS login Page

The initial user name and password of CMS is,

User name: admin

Password: admin

Introduction of CMS

You can customize interactive module of iUI by CMS, includes add, delete and modify. You can add/delete/modify the content of each module, such as picture/video list, add picture/video, add picture/video class, view picture/video class list and add news. The interactive UI displays in

real-time after your updating. It's very fast and convenient.

Each module has 4 sub menu in CMS, including picture/video list, add picture/video, picture/video class list and add picture/video class. Click left navigation bar and you will enter into edit webpage.

Picture/video list shows all pictures/videos in this module. You can delete pictures/videos you don't like, and edit the properties of every picture or video. The properties include Chinese title, English title, link, category, picture/video upload etc.

Add picture/video: you can upload local customizable pictures/videos and make lots of settings such as Chinese title, English title, links, category, picture/video upload and Chinese/English instructions.

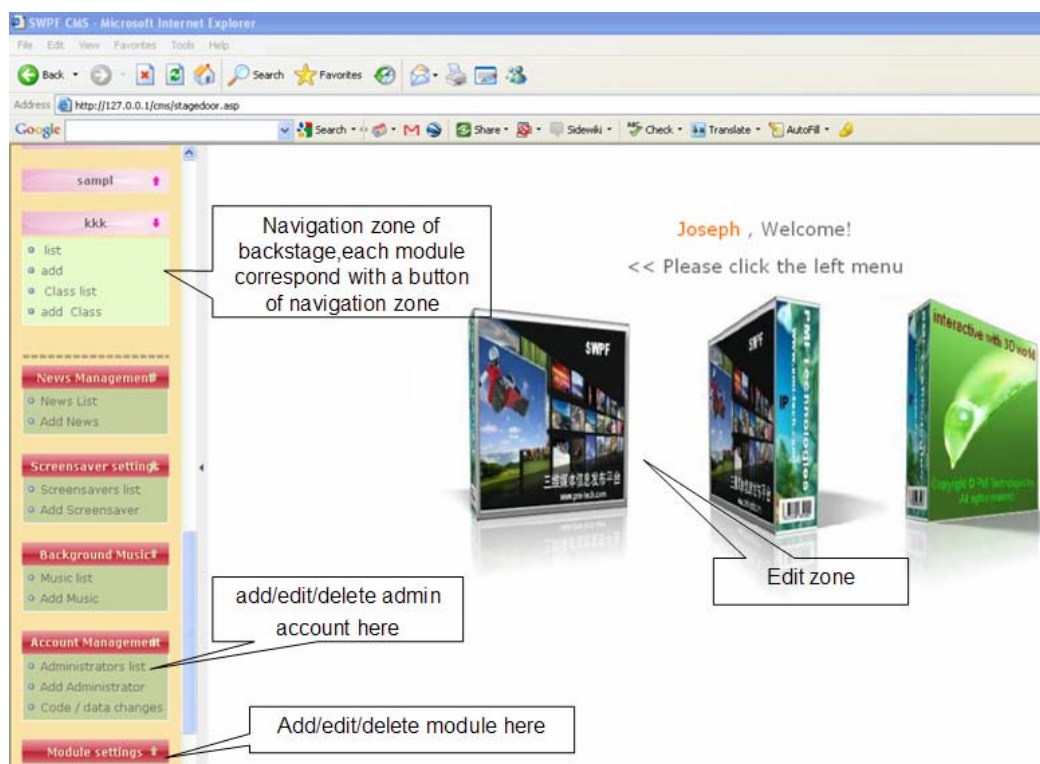
Adding picture/video category and then you can delete or edit existing category. What's more, you can add custom action some, including upper menu, Chinese name, English name, serial number and layer.

Every module can play background music. Whether the background music will play in this module depends on your settings of the module. If you want to add/delete/edit background music, enter background music module and set accordingly.

If you want to edit or add screensavers, only need to edit or add SWF files in the screensaver management page.

If you want to add or edit news, only need to edit or add the content in the news management page.

If the interactive UI display "No authorized, please contact PMI, which means the number of authorized module is limited. If you want to use more modules, please contact PMI and buy much more modules please.



Diag 27, main frame page of CMS.

In interactive module's CMS navigation menu, each module could choose to hide or show. For

details information, please reference to [edit module](#).

Content management

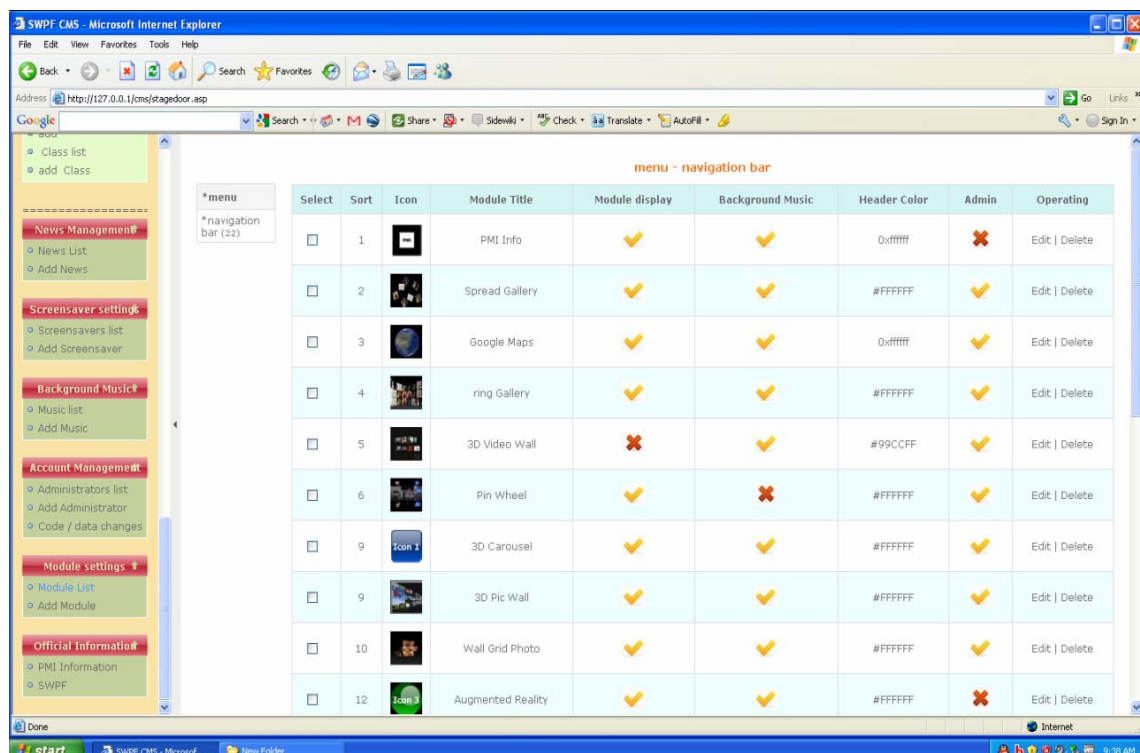
Upload format

Picture format support, JPG, BMP, PNG, etc.

Video format support, FLV, MP4 - H264 format, customization playing module, such as WMV.

You don't need to care about your picture's size, because the built-in conversion tool of image editing can cut different size of images into a picture which matches the interactive UI.

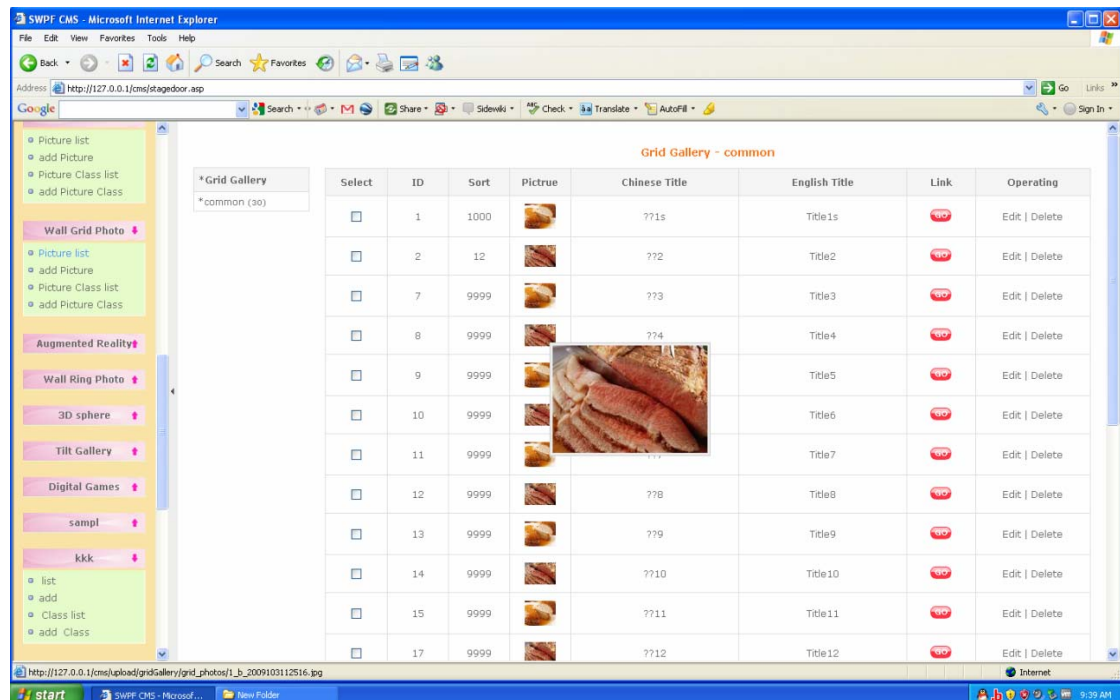
Edit



The screenshot shows the SWPF CMS interface in Microsoft Internet Explorer. The browser address bar displays `http://127.0.0.1/cms/stagedoor.asp`. The left sidebar contains a navigation menu with categories like 'Class list', 'News Management', 'Screensaver settings', 'Background Music', 'Account Management', 'Module settings', and 'Official Information'. The main content area is titled 'menu - navigation bar' and contains a table listing various modules.

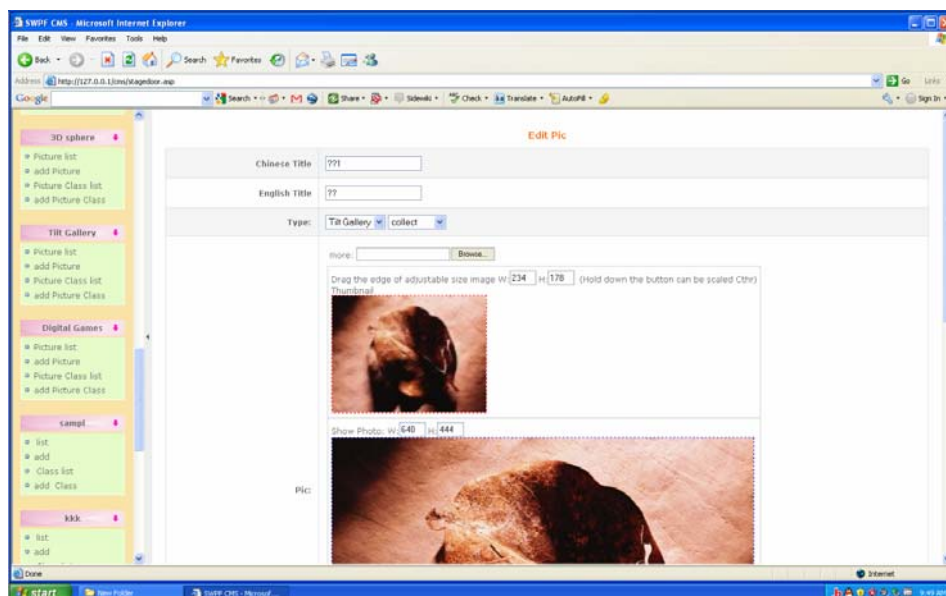
Select	Sort	Icon	Module Title	Module display	Background Music	Header Color	Admin	Operating
<input type="checkbox"/>	1		PMI Info	✓	✓	0xffff	✗	Edit Delete
<input type="checkbox"/>	2		Spread Gallery	✓	✓	#FFFFFF	✓	Edit Delete
<input type="checkbox"/>	3		Google Maps	✓	✓	0xffff	✓	Edit Delete
<input type="checkbox"/>	4		ring Gallery	✓	✓	#FFFFFF	✓	Edit Delete
<input type="checkbox"/>	5		3D Video Wall	✗	✓	#99CCFF	✓	Edit Delete
<input type="checkbox"/>	6		Pin Wheel	✓	✗	#FFFFFF	✓	Edit Delete
<input type="checkbox"/>	9		3D Carousel	✓	✓	#FFFFFF	✓	Edit Delete
<input type="checkbox"/>	9		3D Pic Wall	✓	✓	#FFFFFF	✓	Edit Delete
<input type="checkbox"/>	10		Wall Grid Photo	✓	✓	#FFFFFF	✓	Edit Delete
<input type="checkbox"/>	12		Augmented Reality	✓	✓	#FFFFFF	✗	Edit Delete

Diag 28, module list

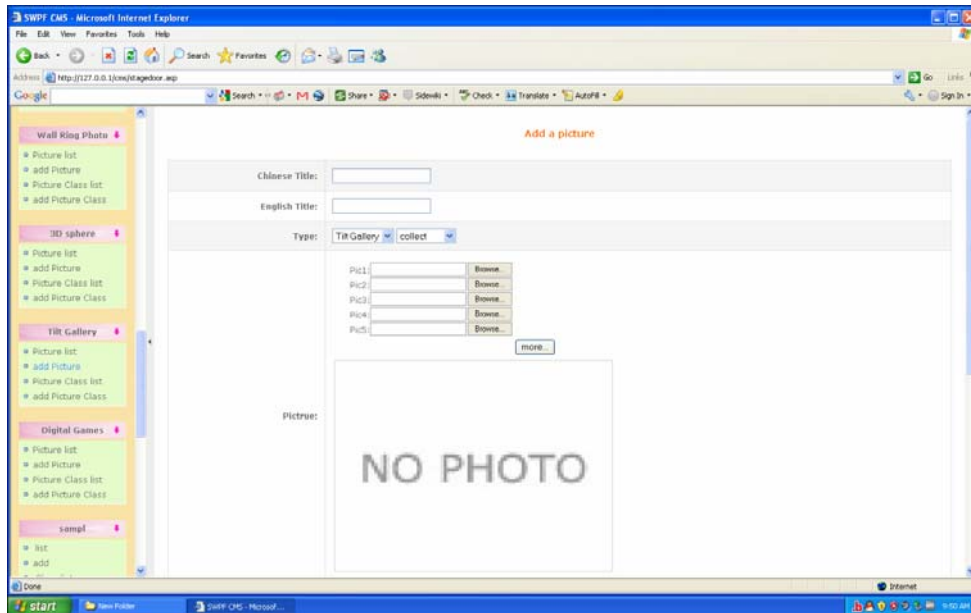


Diag 29, picture list

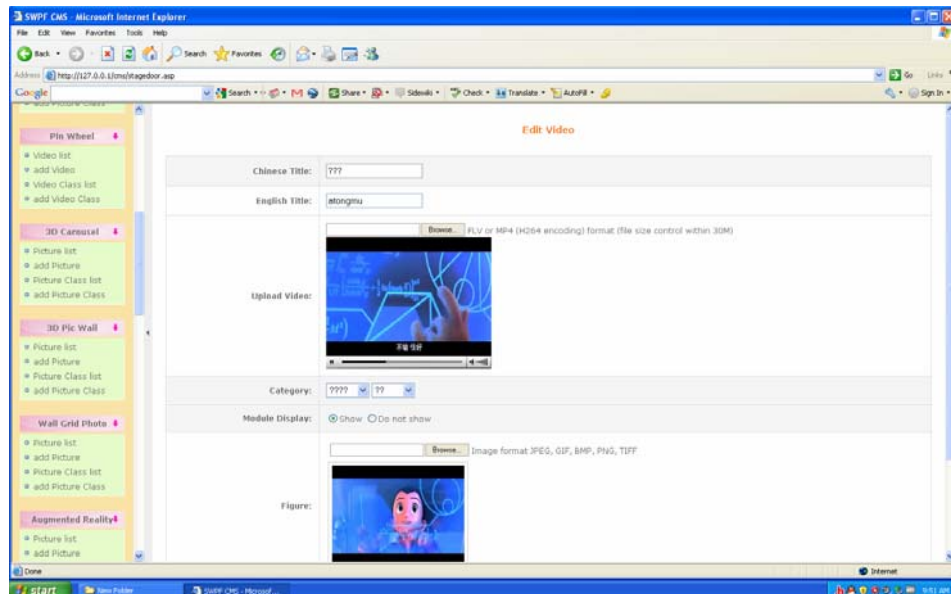
You can modify or delete modules by the buttons above. You can modify the content of the module which marks '√' tag in the CMS module list page. On the contrary, you can only select hide/show module and modify module's name which marks '×' tag and can not modify the contents of the module.



Diag 30 picture edit page

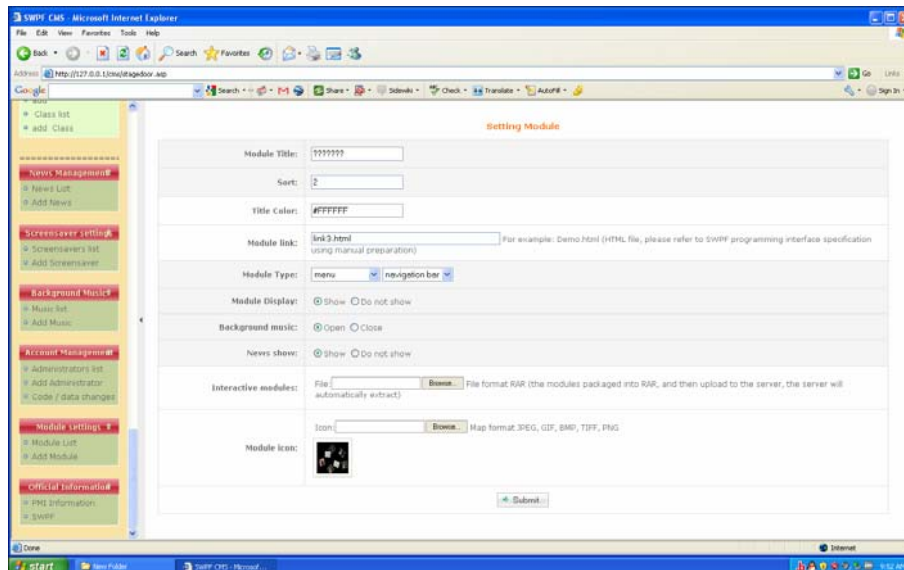


Diag 31, add picture page

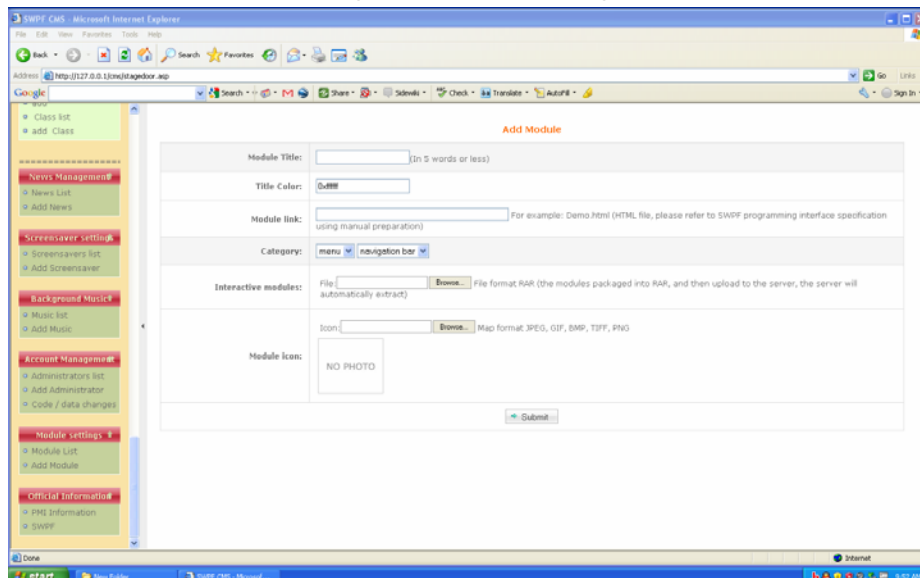


Diag 32 video edit page

Edit module



Diag 33 edit module page

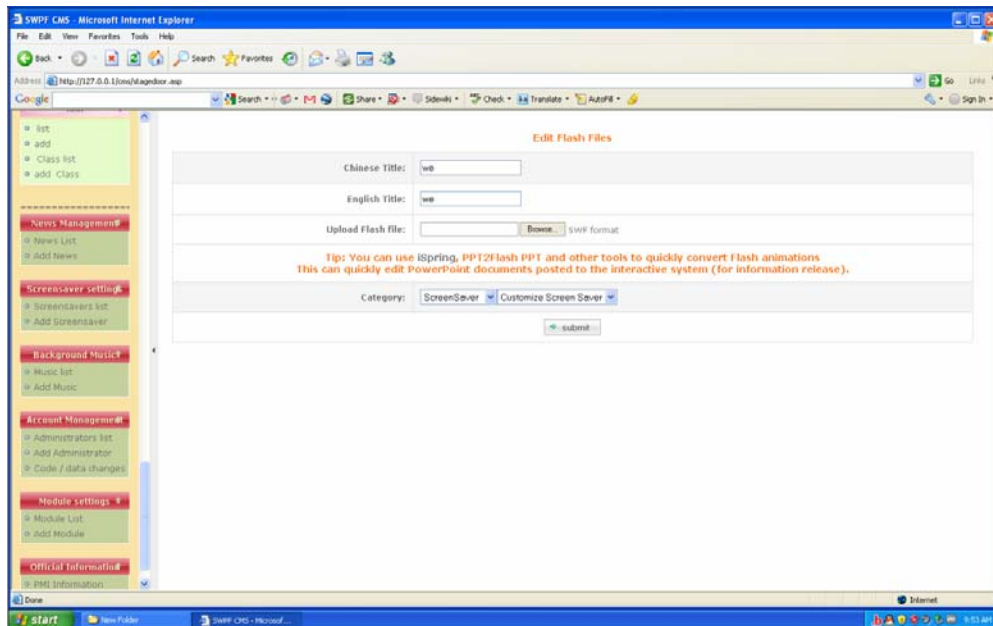


Diag 34 add module page

Select module “hide” option that will hide the displayed interactive module on iUI and CMS navigation menu. Choose module “show” will display ‘\’ tag, would display the module in the iUI and on the CMS navigation menu.

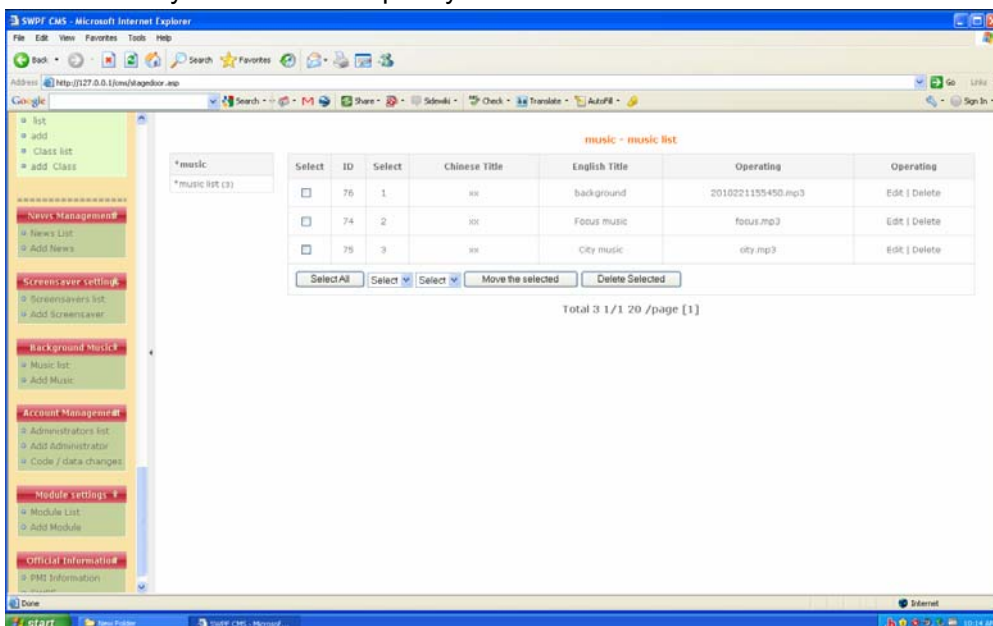
If you want to upload module of RAR file, packaging format of RAR file and html File specification in “module link”, please comply with SWPF Programming Interface Specification, reference to [program interface](#).

Add module

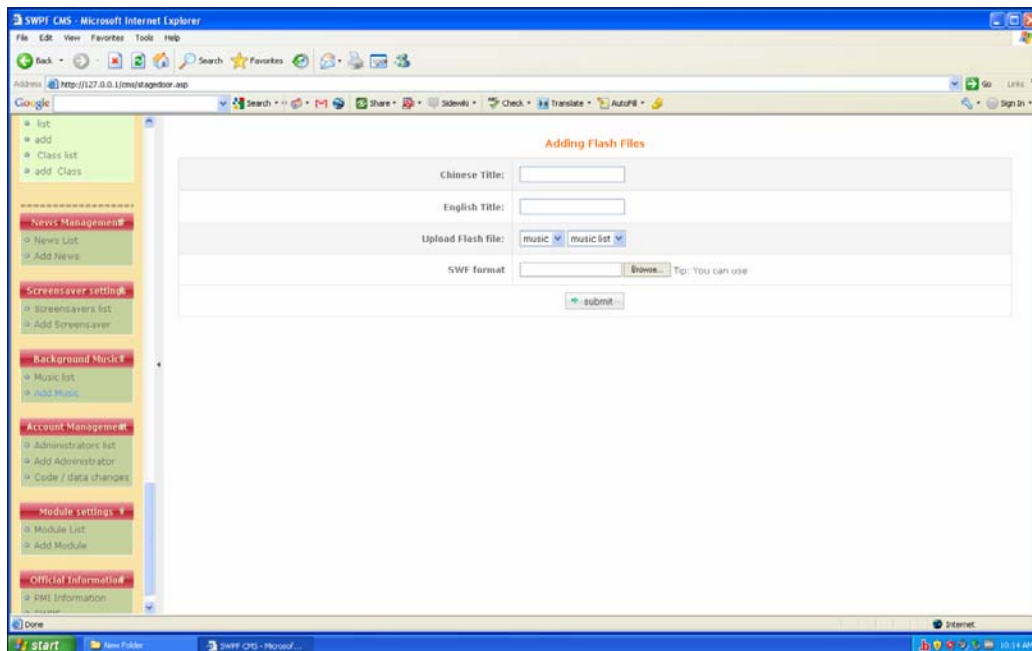


Diag 35, Screensaver management

Edit screensaver files by “screen settings” in navigation menu. You can convert PPT to Flash animations quickly with the help of some tools, such as iSpring, PPT2Flash, etc. This can post documents that edit by PPT to the iUI quickly.



Diag 36, background music list



Diag 37, add background music Page

Admin settings

Code / data changes

Account:	<input type="text" value="admin"/>
New Password:	<input type="text"/>
Confirm Password:	<input type="text"/>
Real Name:	<input type="text" value="Joseph"/>
E-mail:	<input type="text" value="amolzj@gmail.com"/>
<input type="button" value="OK"/>	

Diag 38, Change Password

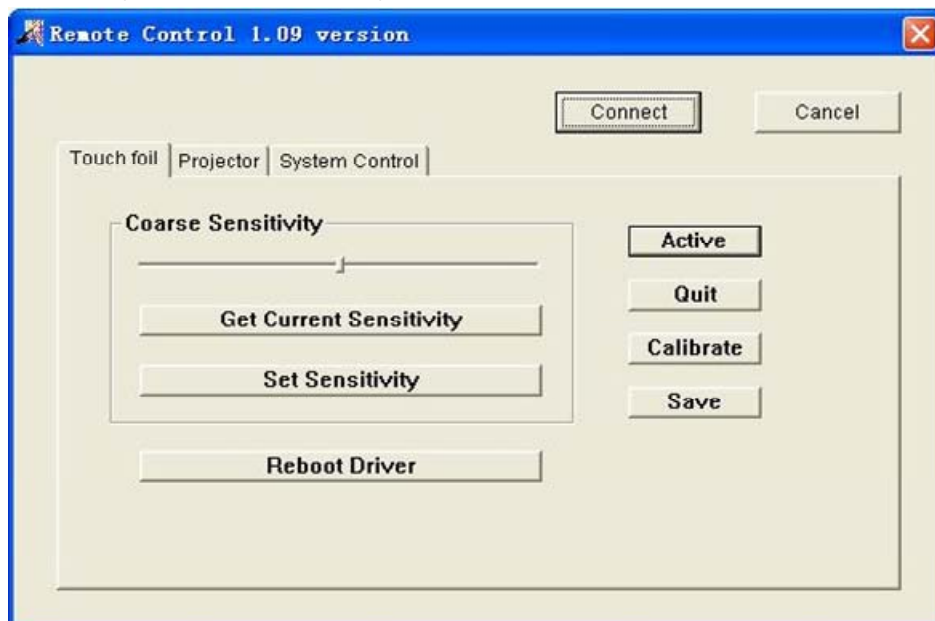
Add Administrator

Account:	<input type="text"/>
User Level:	Super Administrator ▼
Initial Password:	<input type="text"/>
Confirm Password:	<input type="text"/>
Real Name:	<input type="text"/>
E-mail:	<input type="text"/>
<input type="button" value="OK"/>	

Diag 39, add administrator

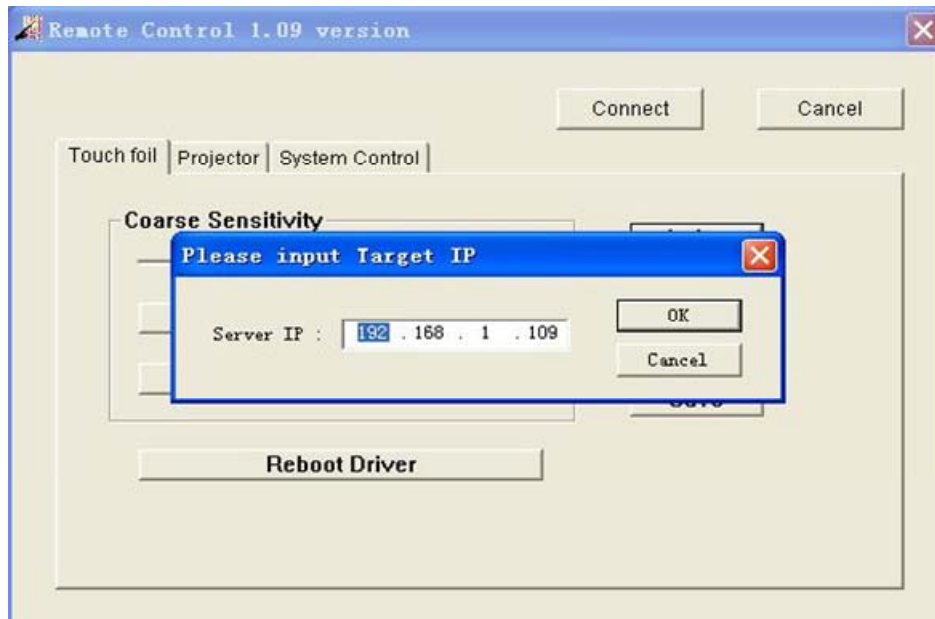
Remote device management

This part is used for the initial installation and maintenance, reference to [Diag 1, location of SWPF Module](#). Copy RemoteCtrl.exe to your laptop, double click the icon to run the program.



Diag 40, remote device management dialog

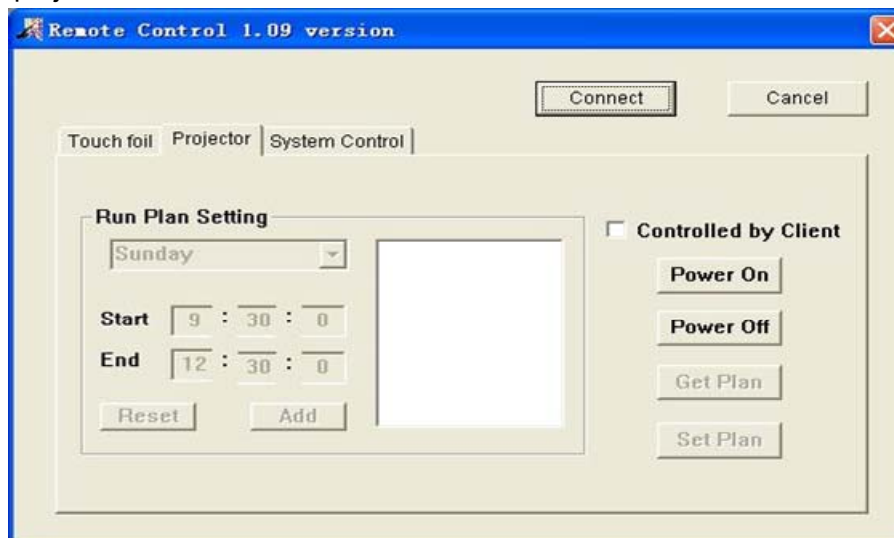
Click "Connect" and input IP address of the ProControl that you want to connect. ProControl is a PC that installed SWPF software, Hereinafter referred to as SWPF Host. Click "OK", a prompt dialog box would pop up, If the connection is successful.



Diag 41, connect SWPF Host

Projector

Select "Projector" property page to control projector remotely after connecting SWPF Host successfully. Select "Controlled by Client", click "Power On" to open projector and click "Power Off" to close projector.



Diag 42 projector management dialog

System control

Select "System Control" property page to control SWPF Host remotely after connecting SWPF Host successfully.

Sound volume control

Click "Mute" button, the sound of SWPF host will mute.

Drag the slider to the right volume location, click "Set Volume" button, set the volume level.

Restart SWPF host

Click "Reboot" button to restart SWPF host.

Close or Open iUI

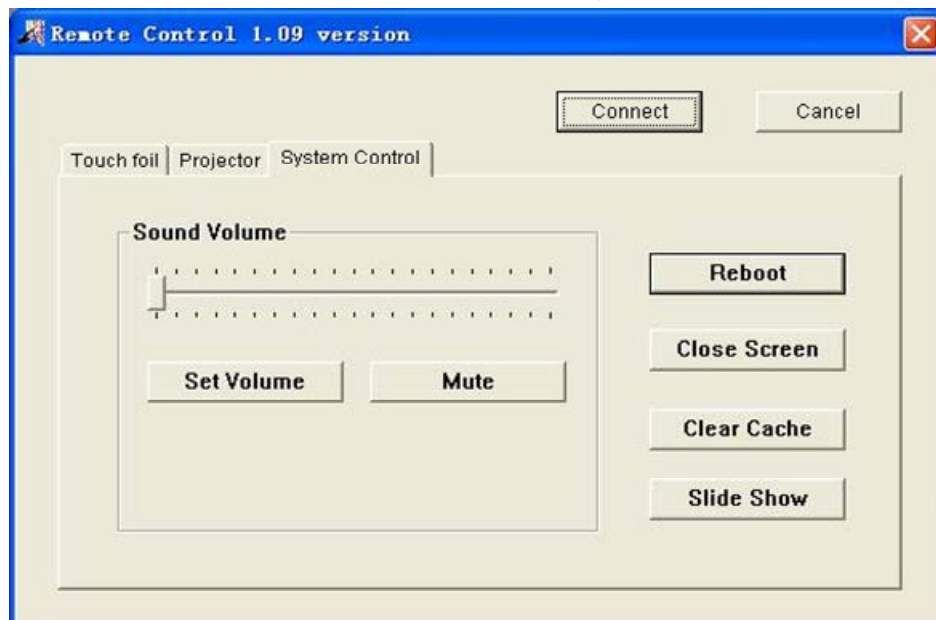
Click "Close Screen" or "Open Screen" button

Clear the cache of SWPF host

Click "Clear Cache" button.

Play screensaver

Click "Slide Show" button, and the screensaver start to play on iUI.



Diag 43, remote system control dialog.

Programming interface

You can add your interactive modules in to SWPF according to the following specification, in order to achieve self-development.

Add custom webpage

Enter CMS , click “module management” and “add module”, add a HTML file to “module link”, Here is a sample HTML file , you can copy it and change the link of code below.

```
<HTML>
<HEAD> <TITLE>Hello World</TITLE>
      <META HTTP-EQUIV="content-type" CONTENT="text/html; charset=Arial"/>
</HEAD>
<BODY>
    <!--edit start-->
    <A HREF=http://www.pmi-tech.com TARGET=mainShow > PMI Technologies Inc.</A>
    <!--edit end-->
</BODY>
</HTML>
```

NOTE: index.html, link1.html, link2.html...link256.html are reserved filename in SWPF system and you should not use them. Please use other filename when name your HTML file.

Add customization Flash or interactive UI.

If you want to embed flash or interactive module into SWPF, copy the code below into html file and modify red part of the code. For example,

```
<HTML>
<HEAD>
<TITLE>PMI Technologies Inc</TITLE>
<script type="text/javascript" src="./js/swfobject.js"></script>
</HEAD>
<BODY SCROLL="no">
    <!--edit start-->
    <div id="flashcontent" align="center"></div>
    <script type="text/javascript">
        var so = new SWFObject("sample.swf", "sample", "100%", "100%", "9", "#000000");
        so.write("flashcontent");
    </script>
    <!--edit end-->
```

</BODY>

</HTML>

Description of parameters in HTML code

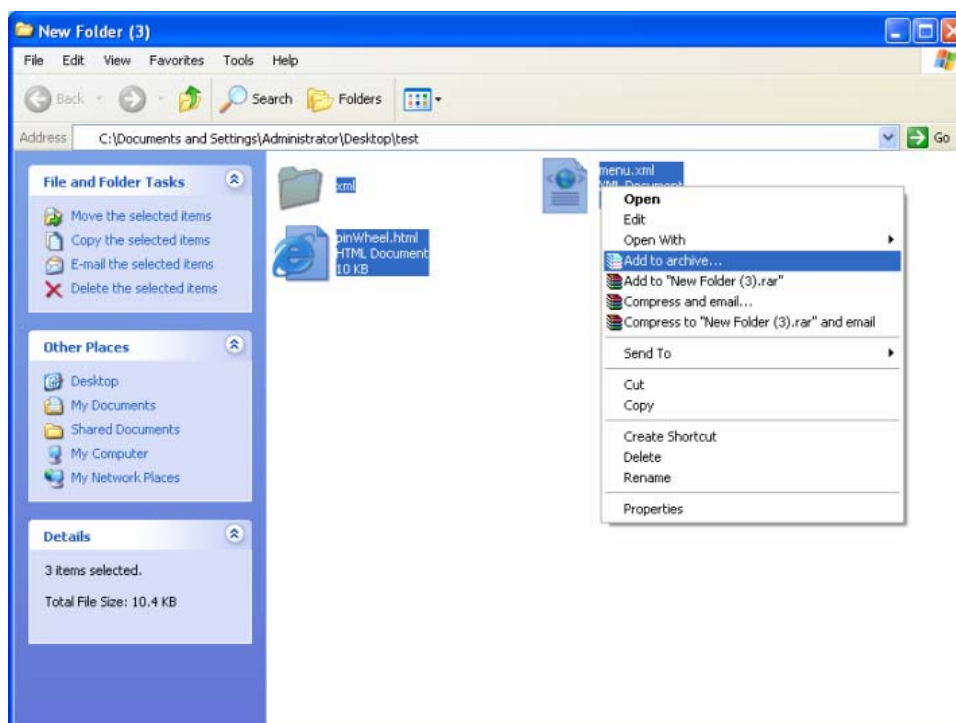
var so = new SWFObject(swf, id, width, height, version, background-color);

creat a new SWFObject and pass parameters below,

swf - swf filename, id - swf file ID, width - flash width, height - flash height, version - flash player version, background-color - flash's background color

RAR file packaging rule

Packing your complete HTML file and flash objects into a RAR file by RAR compression tools, the RAR file includes some files that associated with swf, such as XML, JPG, FLV, MP4, etc. See following diagram for details.



Diag 44, view of compressed RAR file

NOTE: When packing the RAR file, you should notice that the file needs to control in 50MB. And if you want to upload HD things, like video, please contact with PMI and get special application support.

Contact us

Tel, 0086-512-62960949 (Marketing Dept.)

0086-0512-62958949 (Marketing Dept.)

0086-512-62111358 / 62573163 (Technical Support)

Fax, 0086-512-62958949-802, 62111368

Phone, 0086-15050141508

E-mail, sales@pmi-tech.com

marketing@pmi-tech.com

Address: Room 2112, BLDG A, Xintianxiang Plaza, Suxiu RD, Suzhou Industrial Park (Marketing Dept.)

153F, SIPARK, #1355, Jinjihu RD, Suzhou Industrial Park, China (Software Development Dept.)

A4-217, BioBAY, #218 Xinghu ST. Suzhou Industrial Park, China. (R&D Dept.)

Website: <http://www.pmi-tech.com>

FAQ

For our full list of FAQ's please visit <http://www.pmi-tech.com> or call FAB of PMI for technical support. 0086-512-62111358